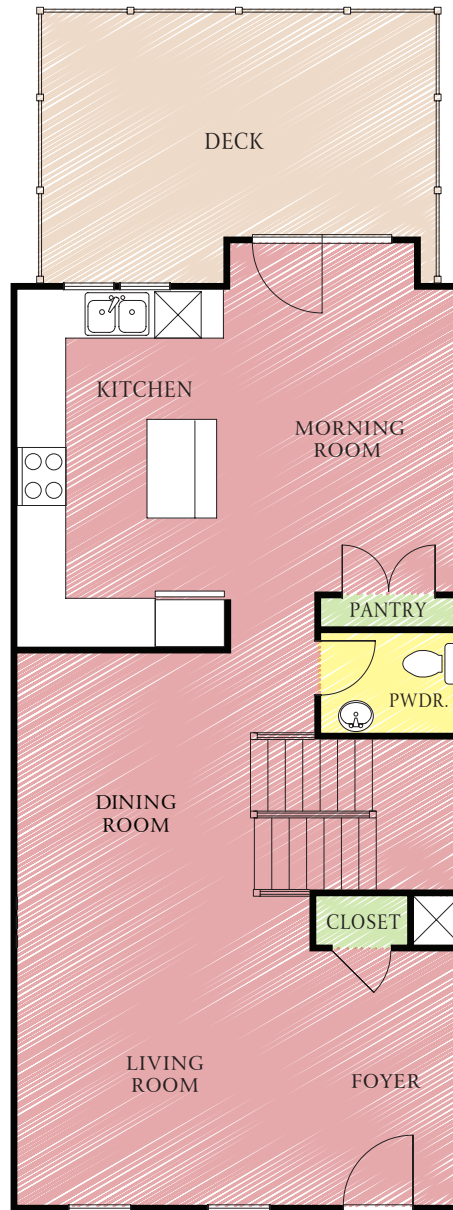
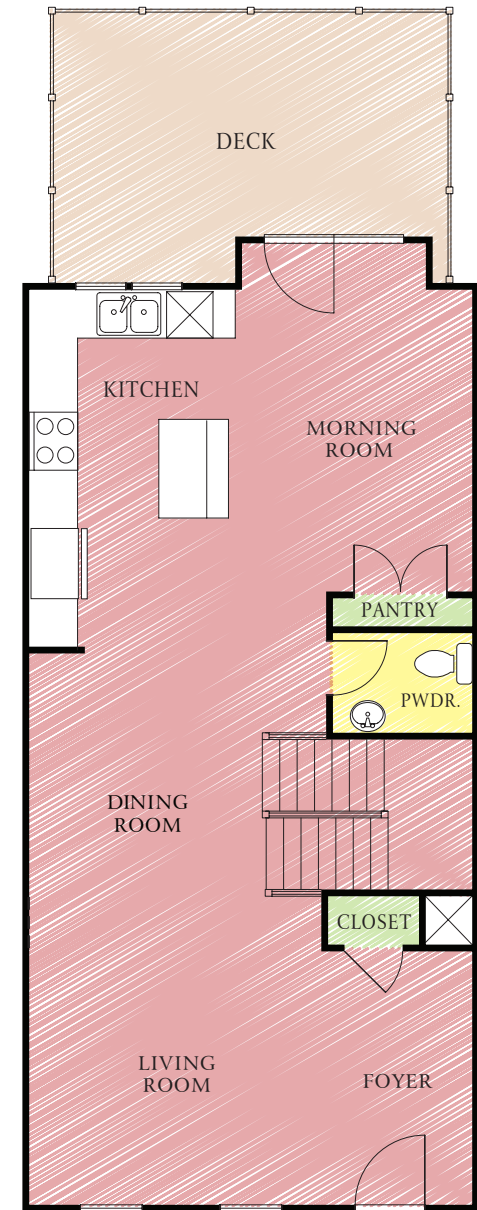


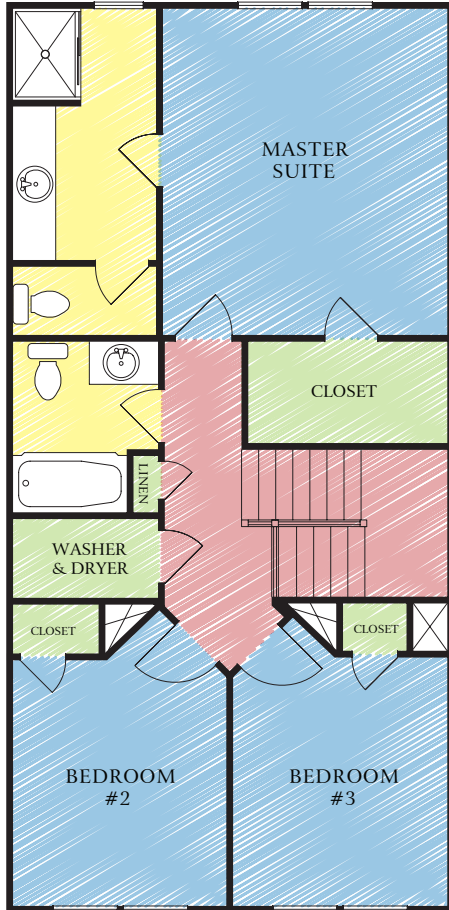
BASEMENT
shown finished (\$15k upgrade)
576 square feet



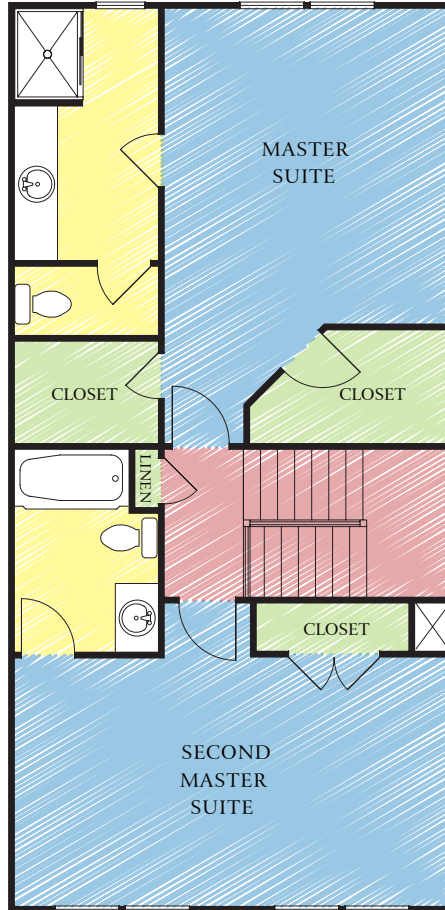
FIRST FLOOR
private kitchen
817 square feet



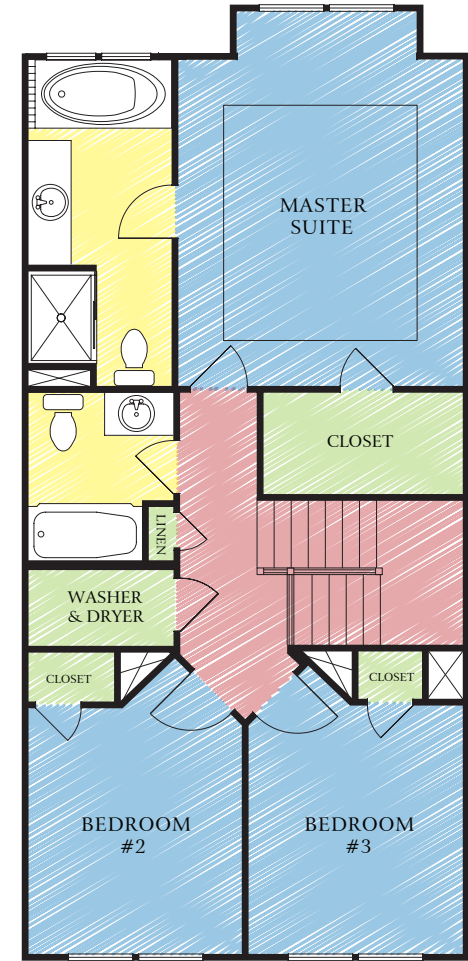
FIRST FLOOR
open floor plan
817 square feet



SECOND FLOOR
three bedrooms
800 square feet



SECOND FLOOR
two bedrooms
800 square feet



SECOND FLOOR
three bedrooms PLUS
817 square feet
includes optional tray ceiling,
whirlpool tub, and room extension